



## Rat anti IL-10 Monoclonal Antibody

**Alternative Name(s): Interleukin 10**

### Order Information

- **Description:** IL-10 (Ms)
- **Catalogue:** 500-8554
- **Lot:** See label
- **Size:** 100ug/200ul
- **Host:** Rat
- **Clone:** APM464
- **Application:** IHC(P), FC
- **Reactivity:** Hu, Ms

### **ANTIGEN PREPARATION**

A synthetic peptide corresponding to human IL-10 protein.

### **BACKGROUND**

Interleukin 10 (IL-10), is a cytokine produced primarily by monocytes and to a lesser extent by lymphocytes. This cytokine has pleiotropic effects in immunoregulation and inflammation. It down-regulates the expression of Th1 cytokines, MHC class II Ags, and costimulatory molecules on macrophages. It also enhances B cell survival, proliferation, and antibody production. This cytokine can block NF-kappa B activity, and is involved in the regulation of the JAK-STAT signaling pathway. Knockout studies in mice suggested the function of this cytokine as an essential immunoregulator in the intestinal tract. Mutations in this gene are associated with an increased susceptibility to HIV-1 infection and rheumatoid arthritis.

### **PURIFICATION**

The rat IgG is purified by Protein A-Affinity Chromatography according to Isotyping

### **FORMULATION**

This affinity purified antibody is supplied in sterile Phosphatebuffered saline (pH7.2) containing antibody stabilizer

### **SPECIFICITY**

The IL-10 antibody recognize 19kDa and 15 kDa of human IL-10 by ELISA and Western blot. The positive control is the human IL-10 recombinant protein. The other species are not tested.

### **STORAGE**

The antibodies are stable for 24 months from date of receipt when stored at  $-20^{\circ}\text{C}$  to  $-70^{\circ}\text{C}$ . The antibodies can be stored at  $2^{\circ}\text{C}$ - $8^{\circ}\text{C}$  for three month without detectable loss of activity. Avoid repeated freezing-thawing cycles.

### **APPLICATIONS/SUGGESTED WORKING DILUTIONS\***

- Western Blot: 0.1-1  $\mu\text{g/ml}$
- ELISA: 0.01-0.1  $\mu\text{g/ml}$
- Immunoprecipitation: 2-5  $\mu\text{g/ml}$
- IHC: 2-10  $\mu\text{g/ml}$
- Flow cytometry: 0.5-5  $\mu\text{g}/10^6$  cells
- Molecular Weight: 19.0
- Positive Control: Kidney Tissue
- Cellular Location: Cell Membrane

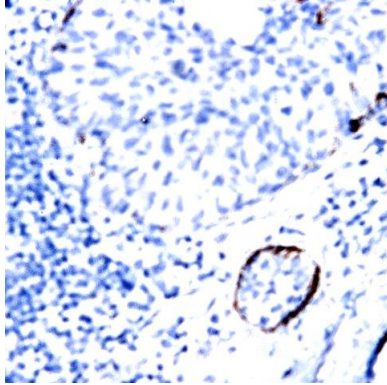
\*Optimal dilutions should be determined by researchers for the specific applications.

### **FOR RESEARCH USE ONLY.**

AbboMax, Inc 2528 Qume Drive, Suite 8, San Jose, California 95131, USA  
1 408-573-1898 (Tel). 1 408-573-1858 (Fax). [www.abbomax.com](http://www.abbomax.com) [info@abbomax.com](mailto:info@abbomax.com)



## DATA ATTACHMENTS



Immunohistochemistry: Human Tonsil (FFPE) stained with Mouse antiIL-10 (Cat# 500-8554) at 1:200 for 10 min @ RT. Staining of formalin-fixed tissue requires boiling tissue sections in 10 mM Citrate Buffer, pH 6.0 for 10 min followed by cooling at RT for 20 min.

## REFERENCES

### FOR RESEARCH USE ONLY.

AbboMax, Inc 2528 Qume Drive, Suite 8, San Jose, California 95131, USA  
1 408-573-1898 (Tel). 1 408-573-1858 (Fax). [www.abbomax.com](http://www.abbomax.com) [info@abbomax.com](mailto:info@abbomax.com)